

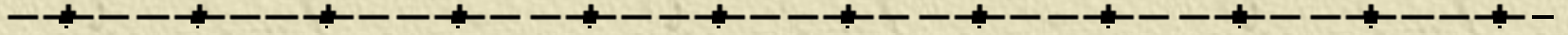


GHB Bottles

Photo by Erowid, © 1997 Erowid.org



GHB

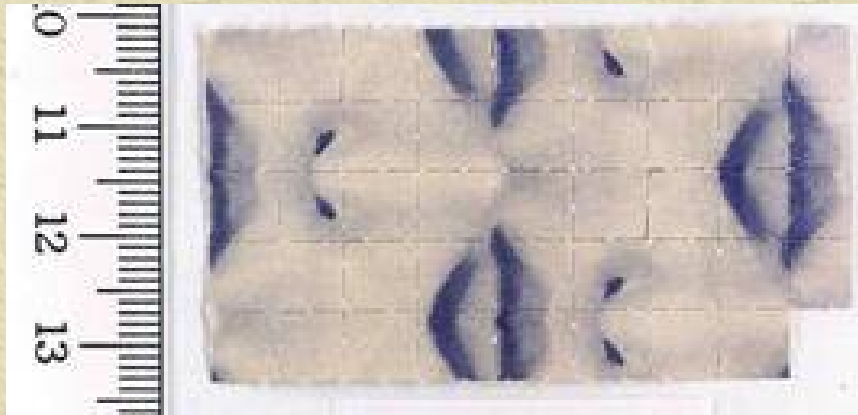


✦ 迷姦水

✦ G 水

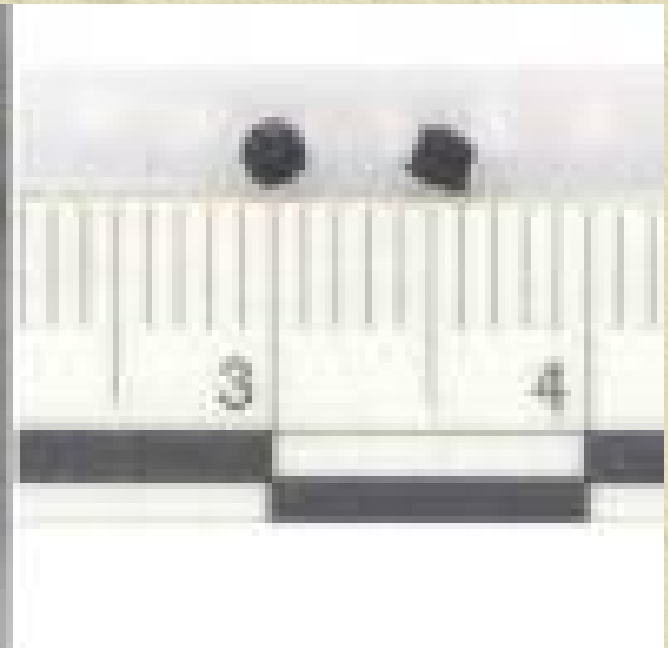
✦ X 水

LSD - blotting paper



A single tab usually contains between 30 - 100 ug of LSD

LSD - micro-pill (Fing Ba)



K / 茄 (氯胺酮)

✦ 原本用途：



✦ 問：點解會流鼻血？

✦ 答：內有玻璃粉／補
過頭．．



✦ 食完後會
K-hole？



Ketamine



Ketamine Inhaling device



忘我/fing頭



資料提供:Poison Centre at the University of Bohn



MDMA, Ecstasy

(3, 4-Methylenedioxyamphetamine)



Buddha MDMA Tablets
Photo by Ole Wayne Kozlowski, © 2001 Erowid.org



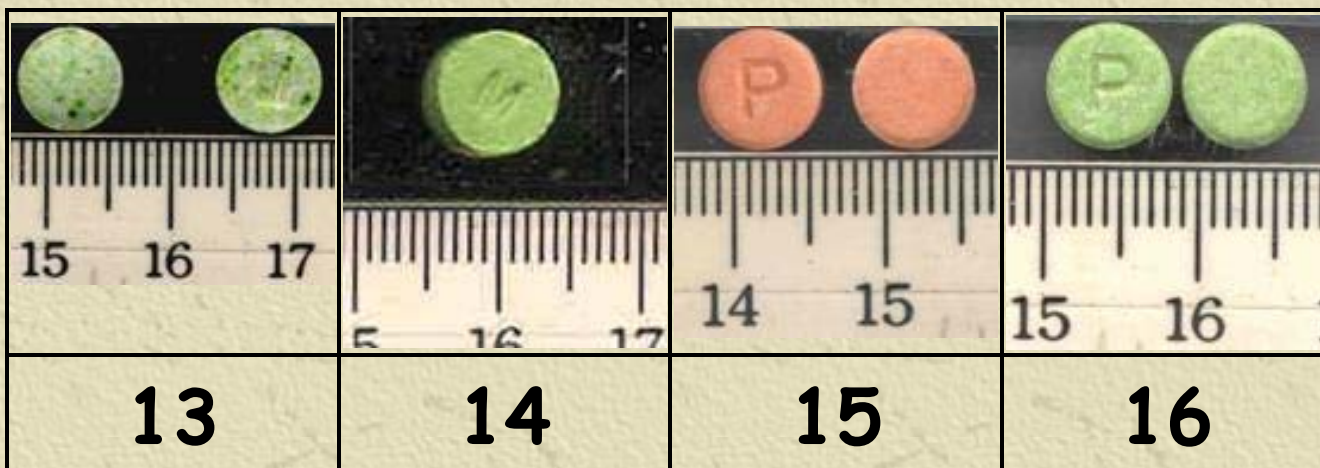
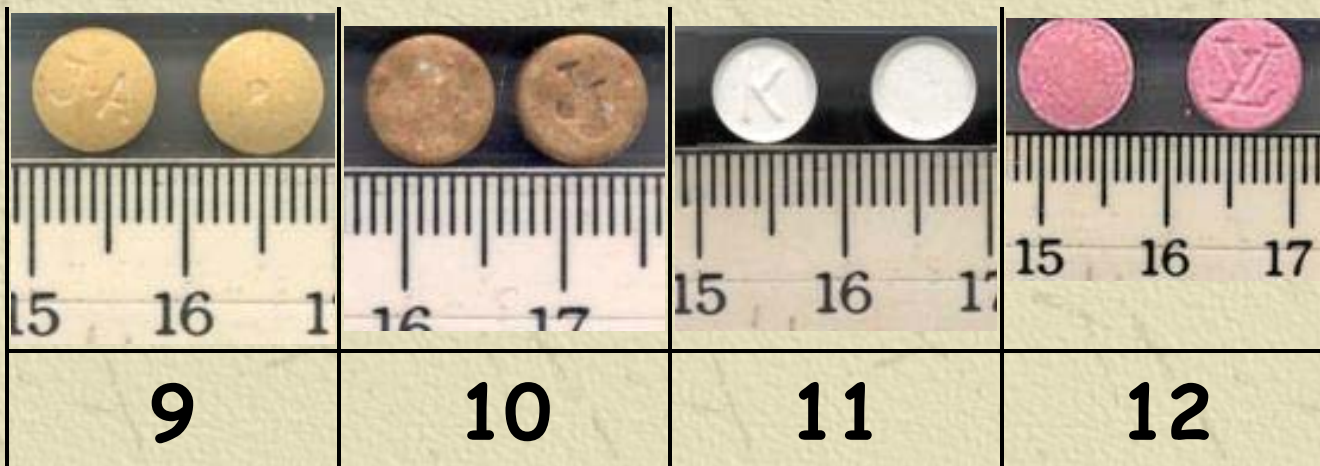
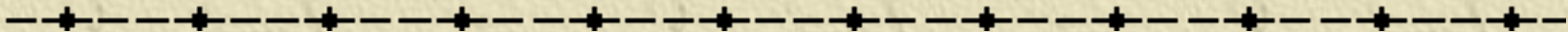
2.73 grams pure MDMA
Anonymized Photograph, © 2000 Erowid.org

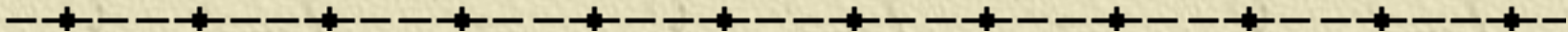


A large quantity of "GU" Ecstasy tablets
Anonymized Photograph, © 1998 Erowid.org

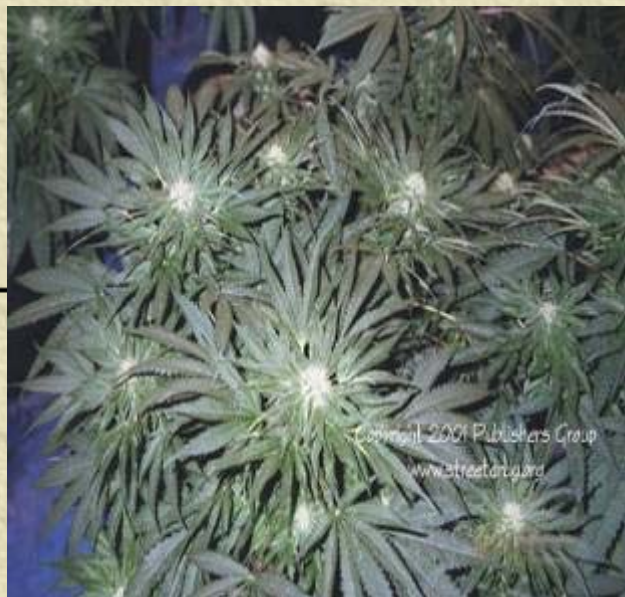


99 Ecstasy (MDMA) Tablets
Image © 2000 Erowid.org





大麻



✱ 問：食大麻會唔會上癮呢？

✱ 其實，大麻煙內有可能含有咳藥水．．

✱ 問：點解食完後覺得好開心，人人好nice？



Cannabis preparations



Methamphetamine

- ✦ 去氧麻黃
- ✦ 甲安非他明
- ✦ 冰



Methamphetamine



Usually carried in plastic bags or aluminium foil packets.
A 1-gram plastic bag of 'Ice' is called 'a stroke'.

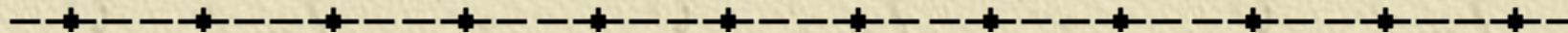
Alum



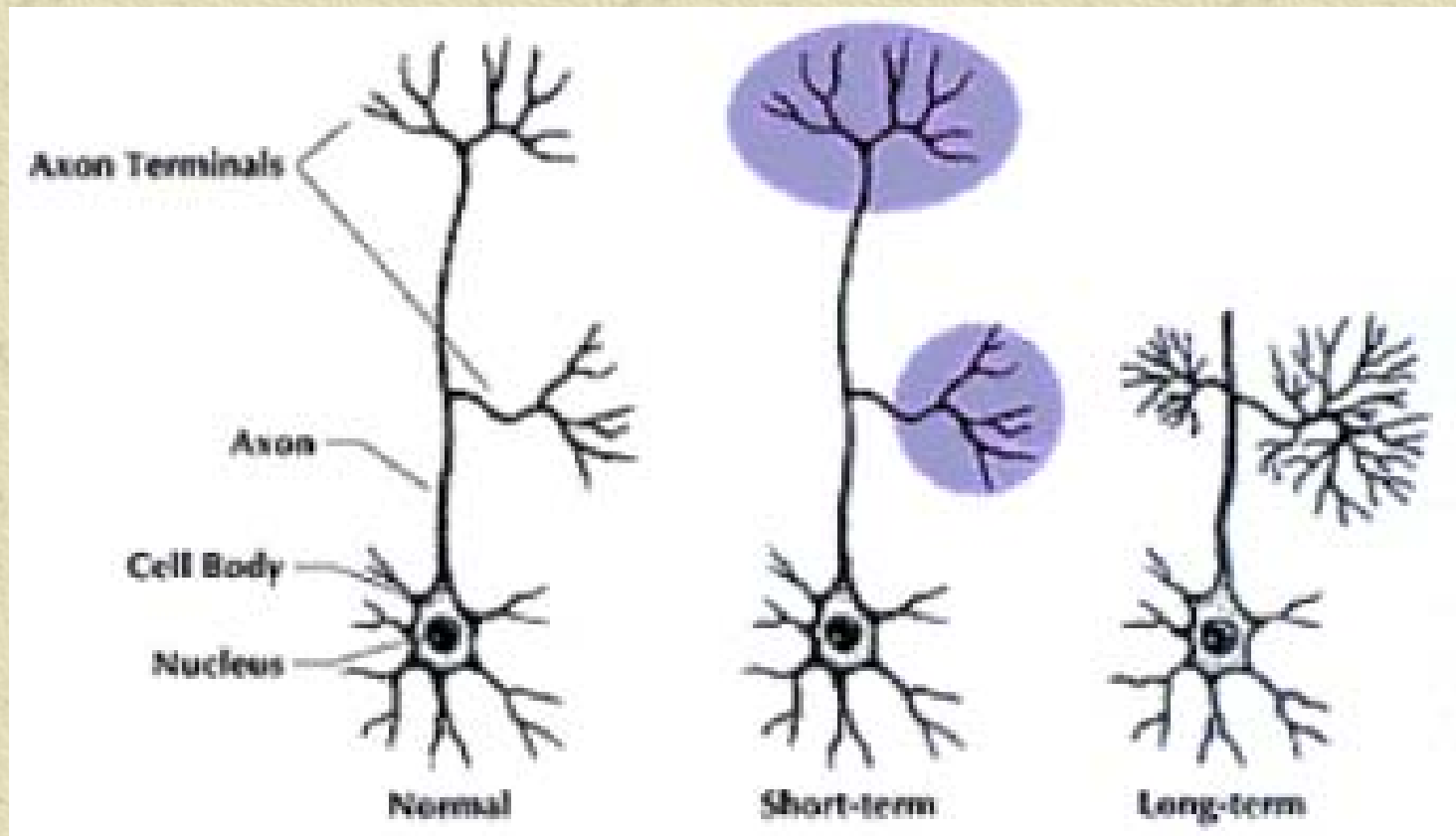
Hookahs



後遺症

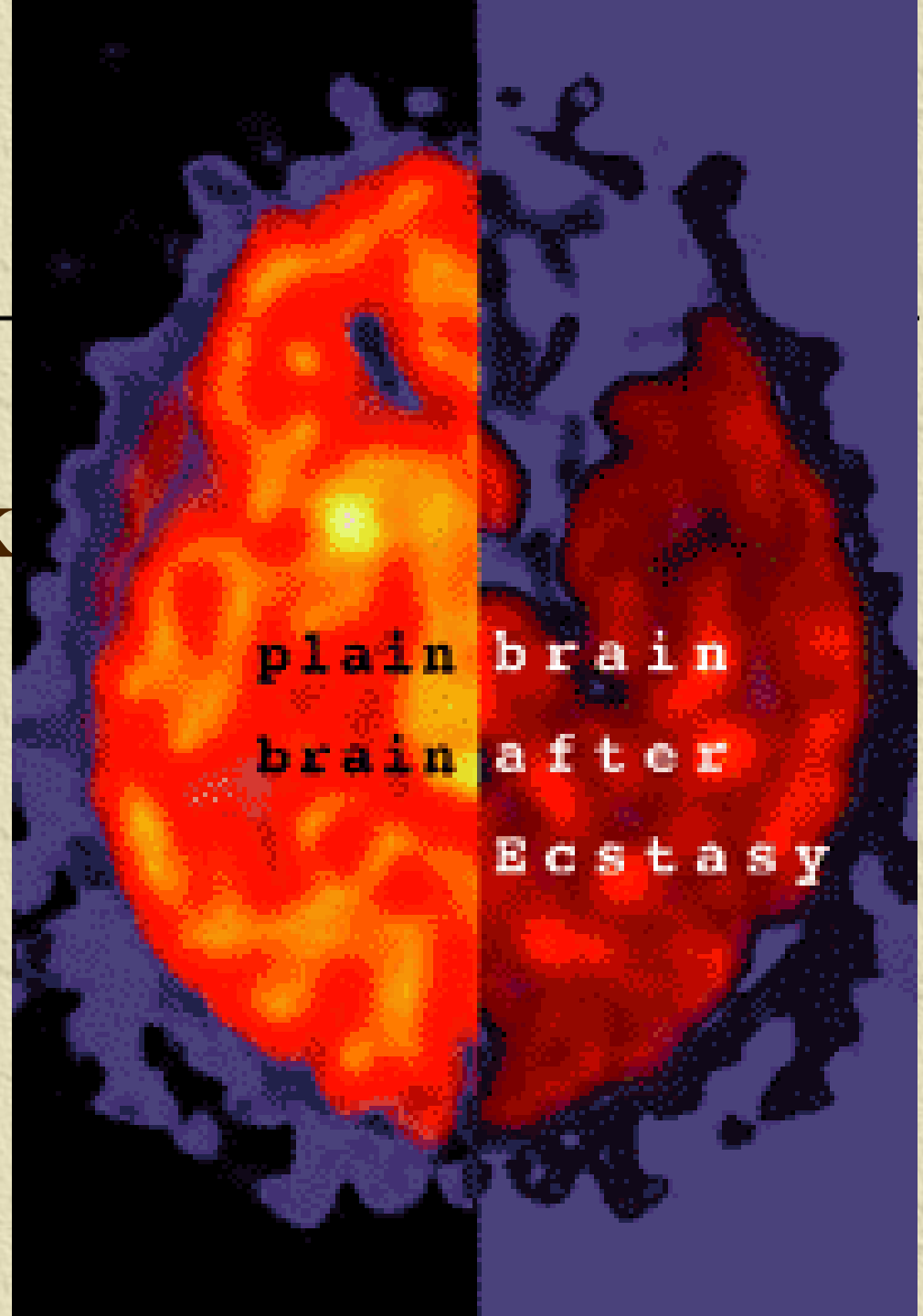


派對丸仔

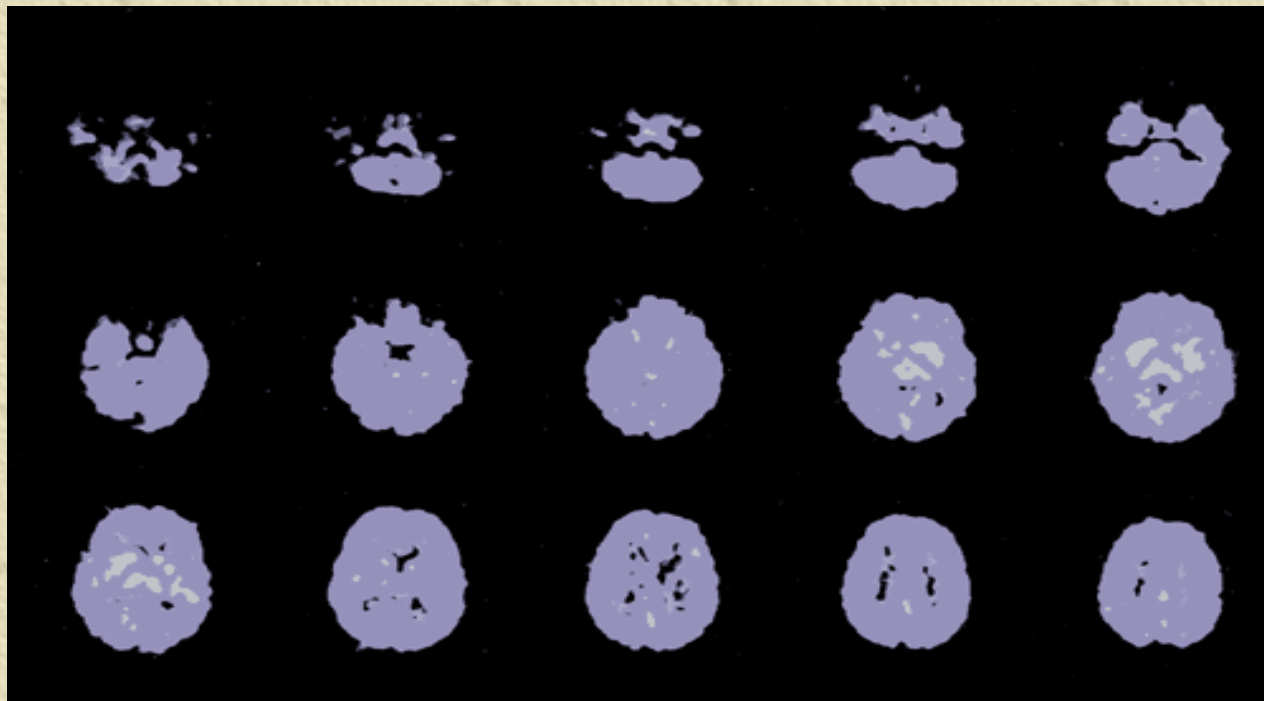
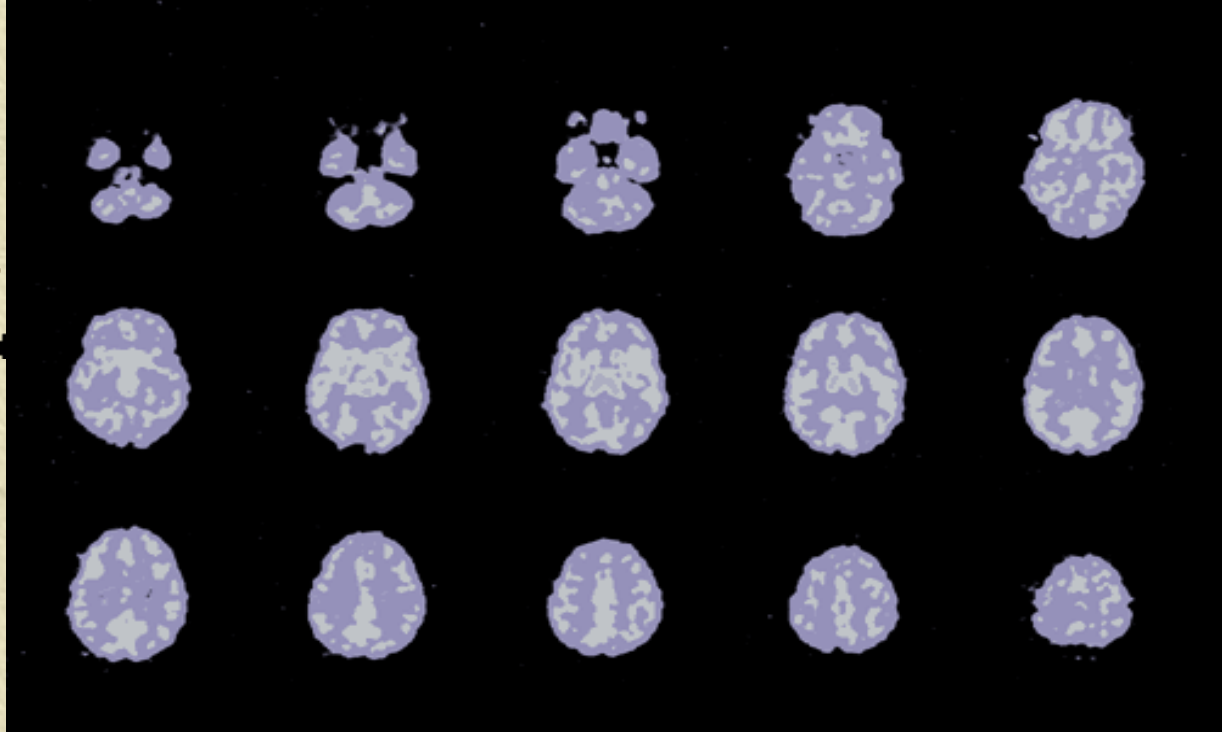


可造成腦細胞永久損害

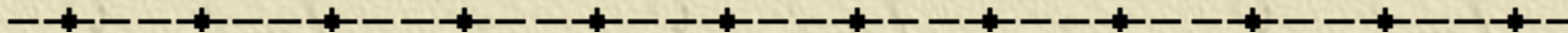
Brain scan
after 3 weeks
without
Ecstasy

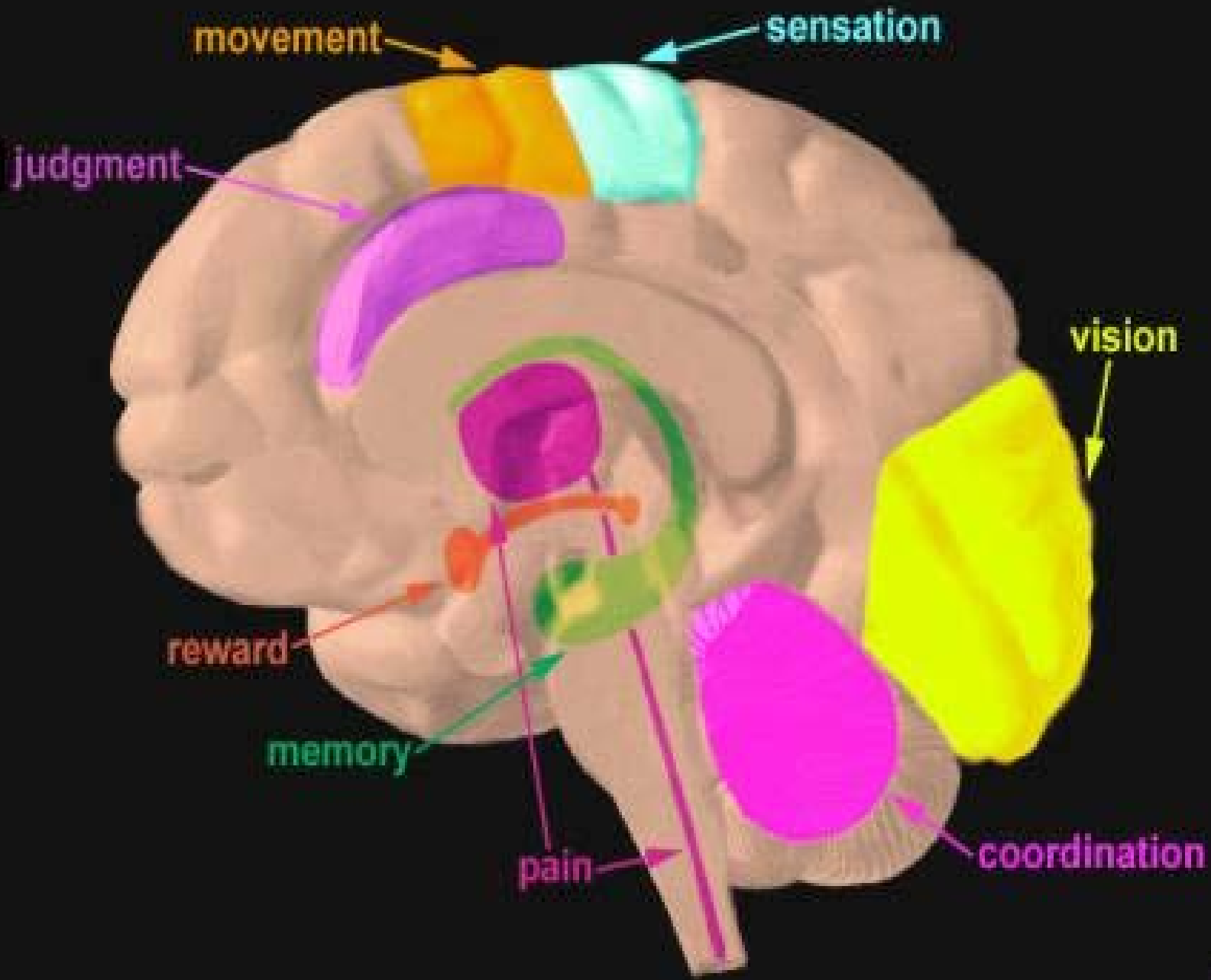


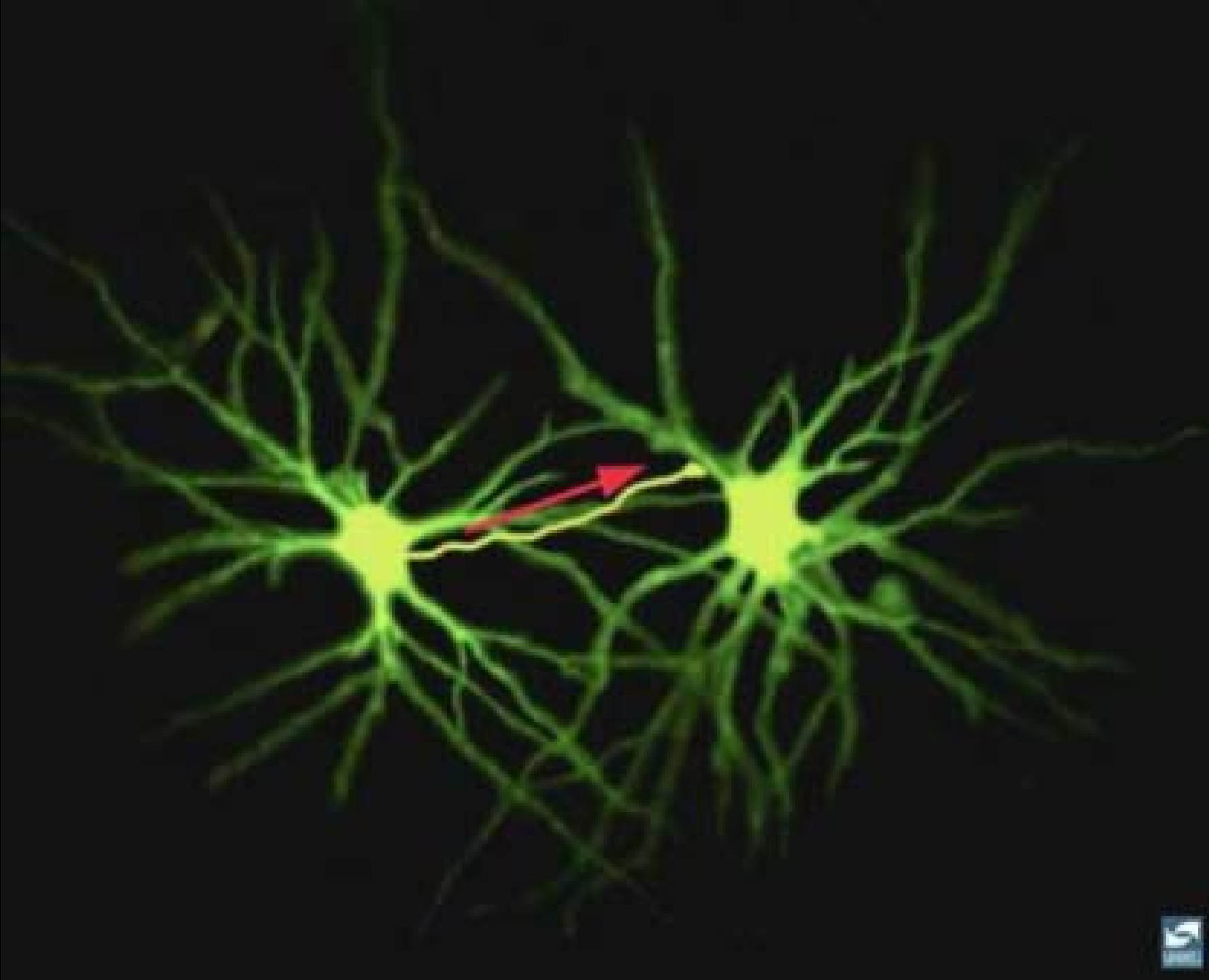
Brain scans of non-users vs users



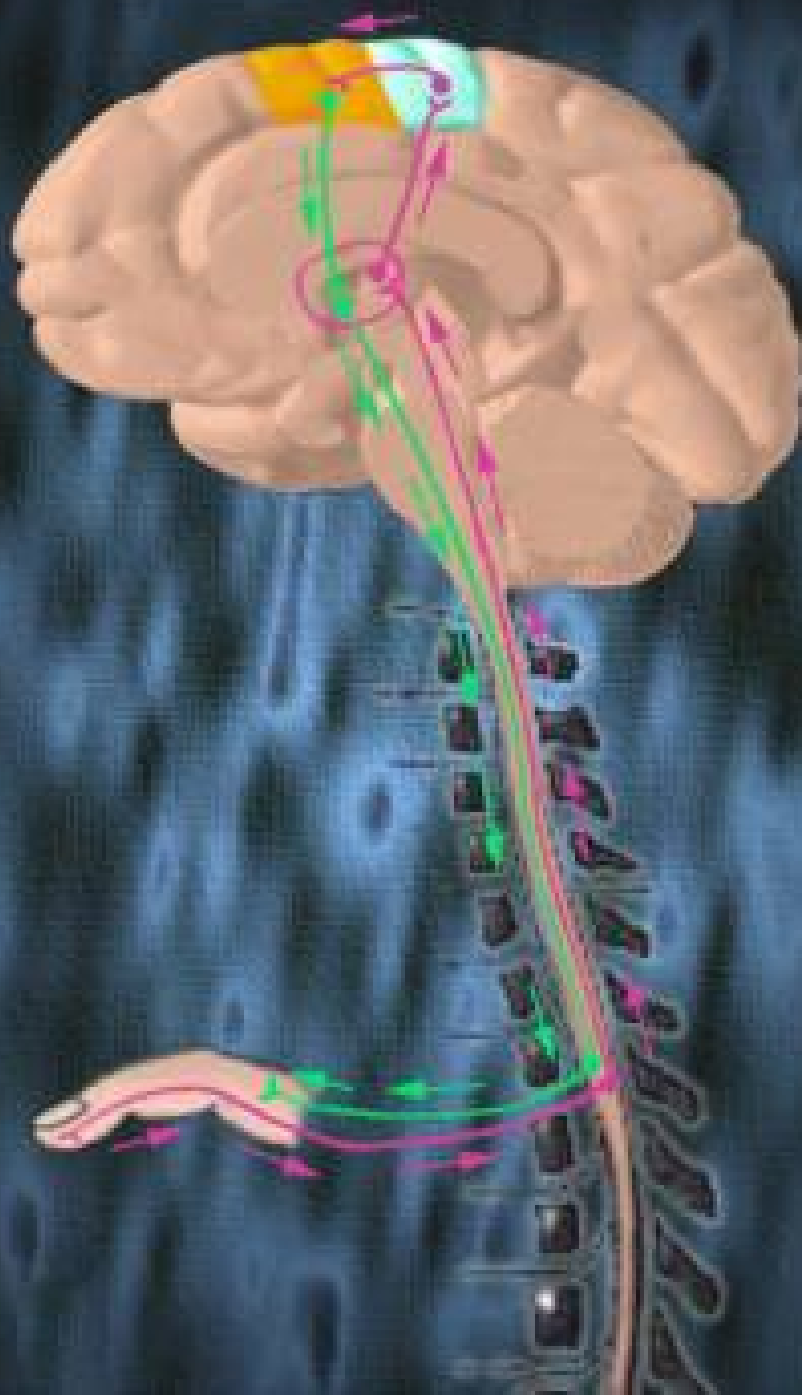
精神病後遺症







神經系統



藥物濫用的程度

無

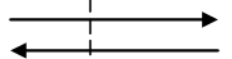
小量

中量

大量

極大量

藥物濫用



藥物成癮

嚴重

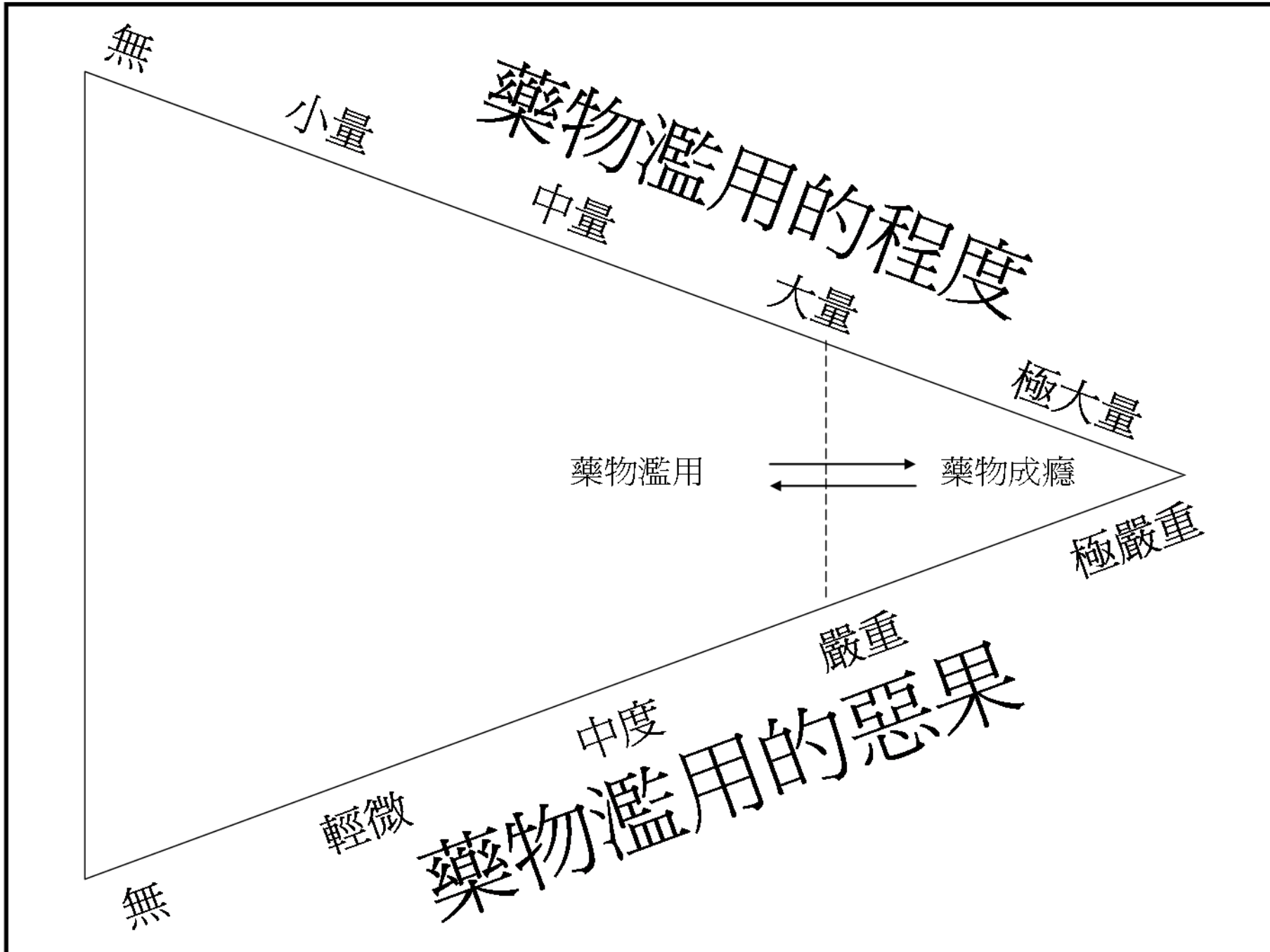
藥物濫用的惡果

無

輕微

中度

極嚴重



驗身計劃









