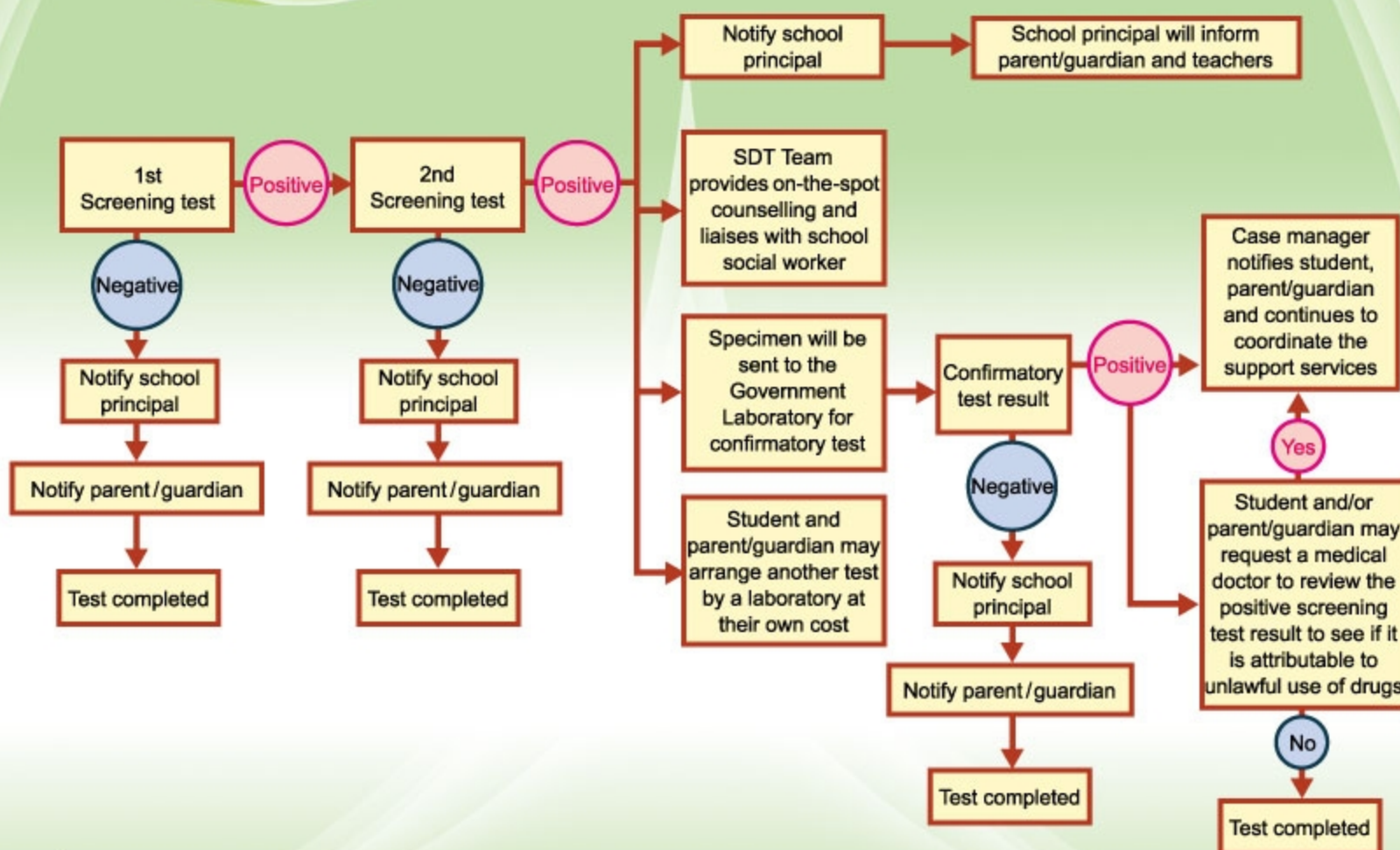


## Screening Test

As the trend of taking illicit drugs may change rapidly, the types of drugs to be tested may be changed during the course of the Scheme. Types of drugs to be tested at present include the five most common types of drugs abused by adolescent drug abusers in Hong Kong: Ketamine, Ecstasy, Ice, Cannabis and Cocaine

## Screening Test Flow Chart



## Trial Scheme on School Drug Testing in Tai Po District (School Year 2010/11)

## Multi-disciplinary case conference

- Case manager will convene a multi-disciplinary case conference within 10 working days after notification of a confirmed case
- Members of the case conference include parent/guardian, school principal, school social worker, class teacher of the student, any other teacher suggested by the student and other helping professionals such as educational psychologist
- The purpose of the case conference is to formulate a professional support programme of three to six months for the identified student

## Purposes of the Scheme

- (1) For prevention – to enhance the resolve of those students who have not taken any drugs to continue to stay away from drugs, thus help prevent the spread of drugs in schools
- (2) For rendering assistance to students – to trigger the motivation of those students abusing drugs to quit drugs and seek help; to provide appropriate support services to those students who wish to pull themselves out of the drug trap

## Four Guiding Principles of the Scheme

- (1) **helping students** in their best interest<sup>1</sup>
- (2) **voluntary** participation
- (3) keeping personal information strictly **confidential**
- (4) **professional** testing and support services for students

It is worth mentioning that the Scheme is **ONE** of the measures in the comprehensive anti-drug strategy. The Government has all along adopted a five-pronged anti-drug strategy to reduce the supply and demand of drugs:

- (1) preventive education and publicity
- (2) treatment and rehabilitation
- (3) legislation and law enforcement
- (4) external cooperation
- (5) research

## Consent to Participation

- both students and their parents/guardians need to sign on the form of Consent to Participation to join the Scheme
- participating schools will provide the form at the beginning of the school term; the Consent to Participation is valid for one school year

Note 1: In line with the objectives of the Scheme, students found to have abused drugs under the Scheme will not be prosecuted for the offence of drug consumption nor be expelled from school

## Random Selection

- An external Student Drug Testing (SDT) team will conduct the random selection
- Each student joining the Scheme has equal opportunity of being selected
- Except for those identified students who have already enrolled in support programmes under the Scheme, a student selected for a screening test will remain in the total population subject to future random selection

## Procedures of Screening Test

- The SDT team will conduct the screening test which takes about 10 to 15 minutes. The basic procedures include:

- Screening interview
- Collection of urine specimen
- Screening test
- Debriefing after the test

If the first screening test returns a positive result, the SDT team will conduct a second screening test using a urine test kit of a different brand. If the results of both screening tests are positive, the SDT team will deliver the concerned urine specimen to the Government Laboratory for a confirmatory test. Please refer to the flow chart for details

- A Government project officer will be present and observe the work of the SDT team on the drug testing day

## Procedures of Urine Specimen Collection

- The SDT team will provide a clean specimen collection container to the student
- The student is allowed to provide his/her specimen in a rest room that allows for individual privacy
- The SDT team will not observe the specimen collection process



## Support programmes for students

### For experimental abusers or non-dependent regular abusers

- Parents/guardians may arrange medical and counselling services through their own means
- Students may continue normal schooling as far as possible, and at the same time receive counselling and assistance from school social workers and designated teachers at school
- Students may join the community-based support services outside school, such as counselling sessions in the designated Counselling Centre for Psychotropic Substance Abusers (CCPSA)
- Basic medical support (e.g. further drug testing, body check-up, motivational interview and drug-related consultation) from general practitioners in the local community network, or medical doctors and healthcare professionals engaged by the designated CCPSA
- Cases with psychiatric and other medical complications may be referred to the Psychological Medicine Clinic of Alice Ho Miu Ling Nethersole Hospital or the Substance Abuse Clinic of Prince of Wales Hospital for specialist medical treatment
- Students may join the mentoring scheme implemented by the Home Affairs Department in Tai Po district. The objective of the mentoring scheme is to provide an opportunity for enthusiasts who care for students to share their life experience and to help students face up to challenges in life

### For addicted (dependent) abusers

- Addicted abusers may join voluntary residential programmes provided by the 40 drug treatment and rehabilitation centres in the territory run by 17 non-governmental organisations
- After completing a residential programme, the rehabilitated student may return to schooling and Education Bureau will ensure such social reintegration through the existing placement assistance mechanism

To enquire on the Trial Scheme on School Drug Testing in Tai Po District and to obtain other anti-drug information, please call 186 186

Website of Narcotics Division, Security Bureau:  
[www.nd.gov.hk](http://www.nd.gov.hk)

Apart from participating in the Scheme, a student and his/her parent/guardian can also directly approach any CCPSA for professional assistance. Apart from the counselling services, CCPSAs also provide elementary medical support including voluntary drug testing services. The whole process is kept confidential.